



pearson
ferrier®



19 SUNNY BOWER STREET
Bury, BL8 3HL
Auction Guide £200,000

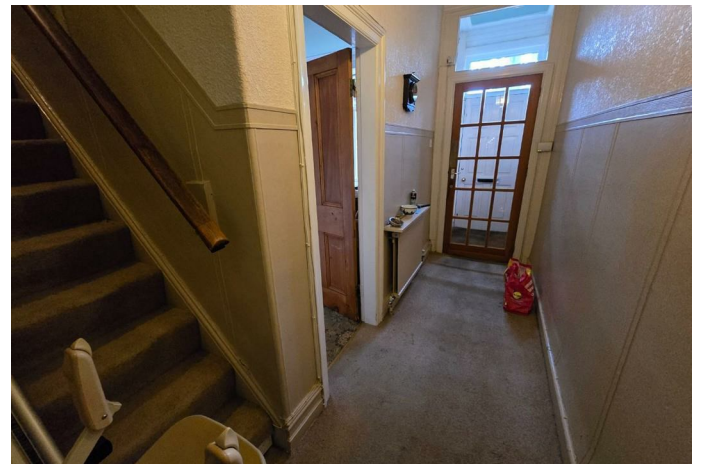
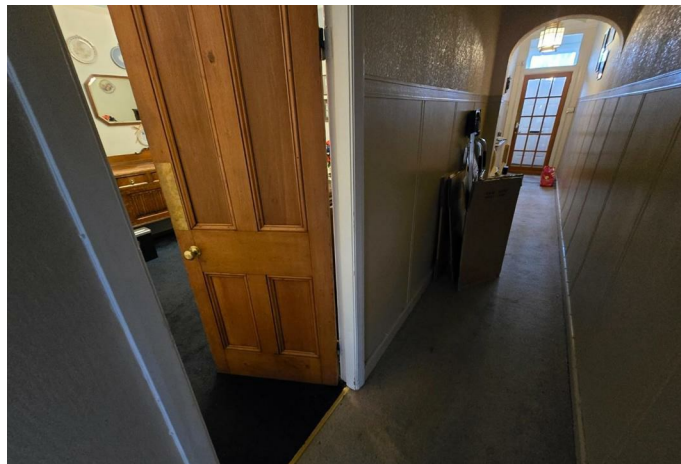
19 SUNNY BOWER STREET

Property at a glance

- A SPACIOUS FREEHOLD TERRACED PROPERTY
- COUNTRYSIDE VIEWS TO THE FRONT
- LOCATED IN TOTTINGTON VILLAGE
- AN IDEAL RENOVATION PROJECT

For sale via Pearson Ferrier Auctions starting Tuesday 10th February, bidding will be on the Pearson Ferrier website and you can register to bid now. Attention property developers, take a look at this large Freehold terraced property on Sunny Bower Street in Tottington Village. The property comprises three double bedrooms, a shower room, a loft room with windows (accessed via a pull down ladder), lounge, dining room, kitchen, utility room, downstairs W.C., hallway and vestibule. Externally there is a garden to the front and a yard to the rear. The property boasts countryside views to the front. The property is in need of refurbishment works, but boasts many original features making it an excellent opportunity for someone looking to renovate a property and either sell on or move in. It is located close to the village centre of Tottington with good local amenities including shops, schools and transport links. For viewings, please contact Pearson Ferrier on 0161 764 4440. Buyers are advised to check the legal pack before bidding, this will be available on the Pearson Ferrier website via the bidding window on the property when available. Any changes to the details will be updated on the Pearson Ferrier website before the auction.





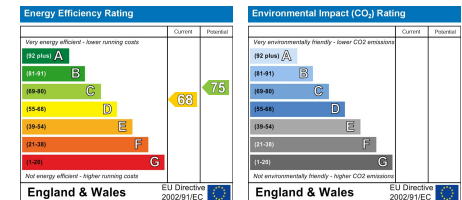
GROUND FLOOR
606 sq ft. (56.3 sq.m.) approx.



1ST FLOOR
436 sq ft. (40.5 sq.m.) approx.



TOTAL FLOOR AREA: 1042 sq ft. (96.8 sq.m.) approx.
Whilst every attempt has been made to ensure the accuracy of the floorplan contained here, measurements of doors, windows, rooms and any other items are approximate and no responsibility is taken for any error, omission or mis-statement. This plan is for illustrative purposes only and should be used as such by any prospective purchaser. The services, systems and appliances shown have not been tested and no guarantee as to their operability or efficiency can be given.
Made with Metropix v2005.



Bury Office
435/7 Walmersley Road, Bury, Lancashire, BL9 5EU
Telephone: 0161 764 4440
Fax: #
Email: bury@pearsonferrier.co.uk

www.pearsonferrier.co.uk



All statements contained in these particulars are for indicative purposes only and are made without responsibility on the part of Pearson Ferrier and the vendors of this property and are not to be relied on as statements or representations of fact. Potential purchasers should satisfy themselves by inspection or otherwise as to the accuracy of such details contained in these particulars.